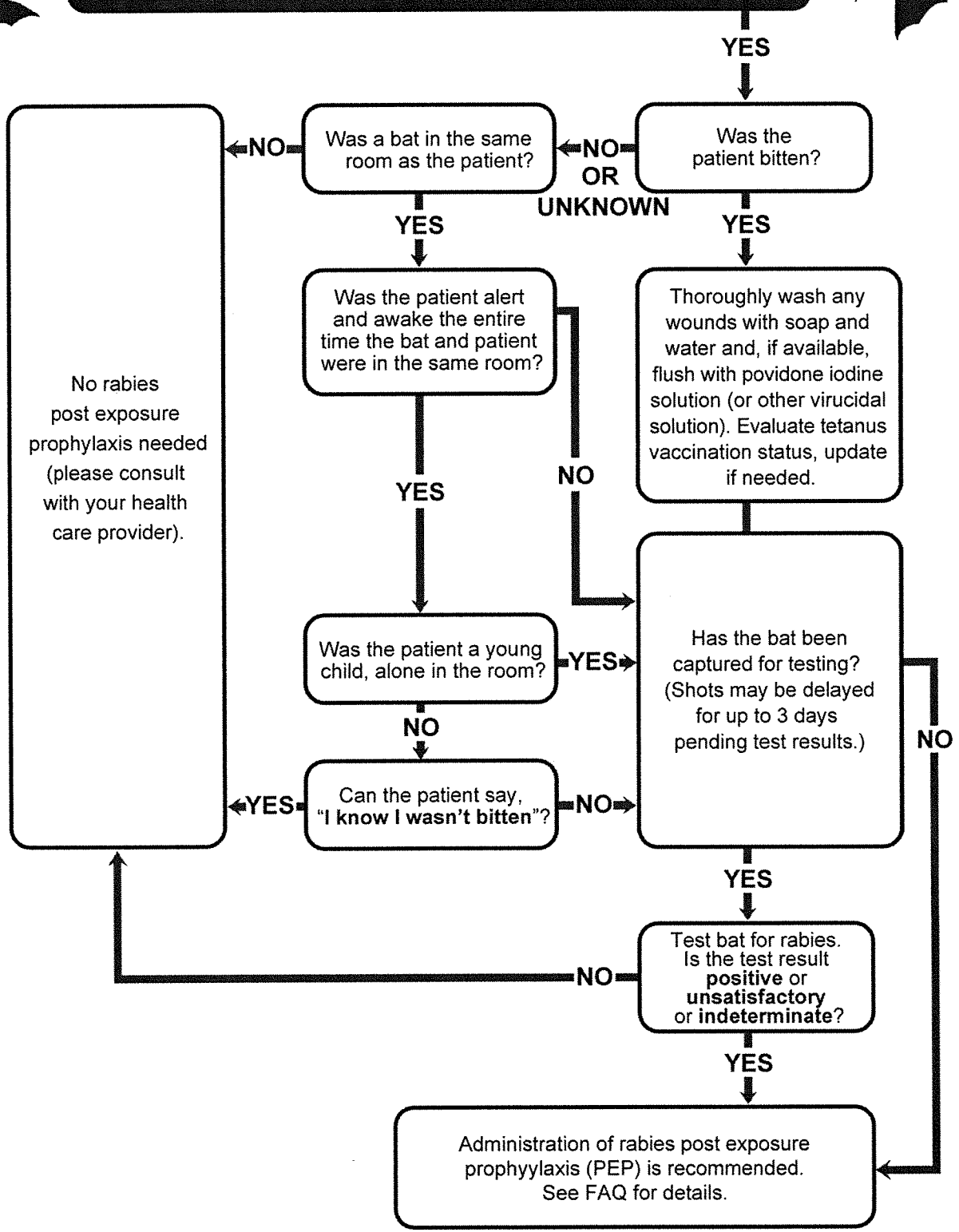


# Rabies Exposure Management for Bat-related Incidents

Was the patient around a bat?



For further questions call:  
 During business hours: 800-362-2736  
 After hours: 515-323-4360



Iowa Department of Public Health,  
 Center for Acute Disease Epidemiology (CADE)

<http://www.idph.state.ia.us/CADE/DiseaseIndex.aspx?disease=Rabies>  
<http://www.cdc.gov/rabies>



<http://www.cfsph.iastate.edu>

## Rabies exposure management frequently asked questions (FAQs)

### What constitutes an exposure?

- There was a bite from an animal to a human.
- There was saliva/neural tissue contact from an animal to a human's open cut or mucous membrane.
- A bat is found in the same room with a sleeping person, an unattended child, an intoxicated person, or anyone unable to confirm that they were NOT bitten.

### What is NOT an exposure?

- Other contact, such as contact with blood, urine, skunk spray, or feces, does not constitute an exposure and is not an indication for prophylaxis.

### If a person that has not been vaccinated is exposed to a rabid animal, what is required for post exposure prophylaxis?

- Human Rabies Immune-Globulin (HRIG) on day 0, plus a series of Human Rabies Vaccines (HRV) on days 0, 3, 7, and 14 (immune compromised patients should receive a 5th dose on day 28 and subsequent titer check).

### If a person previously vaccinated with Human Rabies Vaccine is exposed to a rabid animal, what is required for post exposure prophylaxis?

- Persons with previous rabies vaccination [completed series of the three vaccine pre exposure prophylaxis or the series of four/five vaccines and Human Rabies Immune Globulin post exposure prophylaxis (using Human Diploid Cell Vaccine, Rabies Vaccine Adsorbed, or Purified Chick Embryo Vaccines)], should receive two doses of rabies vaccine on days 0 and 3. The person does not need Human Rabies Immune Globulin.
- Persons previously vaccinated with a rabies vaccination regimen NOT LISTED ABOVE should receive full post exposure prophylaxis unless they have a documented rabies antibody titer (corresponding to complete neutralization dilution of 1:5 or greater by RFFIT testing). Persons with a documented antibody titer should receive two doses of rabies vaccine on days 0 to 3.

### What if a patient can't / doesn't adhere to the rabies post exposure vaccination schedule?

The effectiveness of the rabies vaccines may be compromised if the recommended vaccination schedule is not followed. EVERY EFFORT should be made to administer the vaccines in accordance with the recommended schedule. If a rabies vaccine has been missed, the schedule should resume with the dose missed (i.e., if day 7 vaccine is missed (3rd dose), administer a vaccine today and call this vaccination the "day 7" (3rd dose) vaccination. The next vaccine (4th dose) would be given in 7 more days on "day 14", in keeping with the remainder of the 0, 3, 7, 14 day schedule. When substantial deviations from the schedule occur, immune status should be assessed by performing serologic testing 7-14 days after administration of the final dose in the series. Immune compromised patients will need a 5th dose of vaccine 14 days later on "day 28" and will also need a subsequent titer check. Contact CADE, (800)362-2736 for additional consultation.

### Where can I find Human Rabies Immune Globulin (HRIG) and Human Rabies Vaccine (HRV)?

- Hospitals, especially the larger hospitals, across Iowa carry Human Rabies Immune Globulin and Human Rabies Vaccine.
- If you need to order Human Rabies Immune Globulin (HRIG) or Human Rabies Vaccine (HRV), contact the following manufacturers:

Imogam Rabies	Hyperab (HRIG)	Imovax (HRV) sanofi pasteur	RabAvert (HRV)
sanofi pasteur	Talecris	human diploid cell vaccine	Novartis
800-822-2463	800-243-4153	800-822-2463	purified chick embryo cell culture 800-822-2463 877-683-4732

### How do I get an animal tested for rabies?

Animals can be tested for rabies at one of the following laboratories:

	<u>State Hygienic Lab (SHL)</u>	<u>Iowa State University Veterinary Diagnostic Laboratory (VDL)</u>
<b>Address</b>	Coralville Laboratory State Hygienic Laboratory U of I Research Park, 2490 Crosspark Road Coralville, IA 52241 800-421-4692 (call first)	600 S. 16th Street Ames, IA 50010 515-294-1950 (call first)
<b>Web instructions</b>	<a href="http://www.shl.uiowa.edu/kits/quotes/forms/rabiesslip.pdf">http://www.shl.uiowa.edu/kits/quotes/forms/rabiesslip.pdf</a>	<a href="http://vetmed.iastate.edu/sites/default/files/vdl/forms/RabiesForm.pdf">http://vetmed.iastate.edu/sites/default/files/vdl/forms/RabiesForm.pdf</a>
<b>Submissions</b>	Submit the whole (dead) animal if it is bat-sized or mouse-sized. Submit the HEAD ONLY if animal is larger than a bat/mouse (Should be removed by veterinarian). Live bats are accepted when container labeled "LIVE BAT."	Whole (dead) animal submissions are preferred. Heads of larger animals are accepted (removed by veterinarian, removal instructions on VDL Web site). Occasionally, live animal submissions are accepted with prior approval. There is a fee for euthanasia.
<b>Results</b>	SHL Rabies Test Request Form is required (Available from the SHL Web site). Results are reported ONLY to the physician or veterinarian listed on submission form. Testing is performed 7 days/week. Results (except negatives) phoned to physician/veterinarian.	VDL Rabies Examination Submission Form is required. (Available from the VDL Web site.) <b>Note if a human exposure has occurred for prompt testing. Results are reported to the submitter listed on the submission form.</b> Testing performed M-F (after-hrs testing on approval, only if human exposure). Results phoned to submitter.
<b>Packaging</b>	Double bag the specimen to prevent leaking. Package the specimen with ice or refrigerant packs. DO NOT FREEZE THE SPECIMEN. If bat is alive, label the package "LIVE BAT."	Use a leak-proof container with refrigerant packs. Package the specimen with refrigerant packs. DO NOT FREEZE THE SPECIMEN. Label the package "RABIES SUSPECT."
<b>Transport</b>	Private carrier (patient, relative, or designee) drives the sample and completed form to SHL. Overnight commercial carrier (FedEx preferred) transports properly packaged sample (dead animals only) and completed form.	Private carrier (patient, relative, or designee) drives the sample and completed form to VDL or an overnight commercial carrier (FedEx, UPS, etc.) transports the sample properly packaged and completed form to VDL.
<b>After hours drop off</b>	University of Iowa Hospitals and Clinics (UIHC) Emergency Room will receive after hour samples. Remain in ER until specimen is properly received by ER staff.	Call after hours staff at 515-290-1969 prior to submission for proper drop-off instructions. Dead animals are preferred. There is a fee for euthanasia.
<b>Charge for testing?</b>	There is no charge for testing if there has been a human exposure (exposure definition above).	Yes. Please note if human exposure has occurred to ensure prompt testing.